

A close-up photograph of a person in a white shirt pouring tea from a dark teapot into a row of five small, dark brown ceramic bowls. Steam is rising from the bowls, indicating the tea is hot. The background is softly blurred, showing the person's hands and the teapot. The overall lighting is warm and golden.

Feasibility analysis for an on-campus teahouse

Client: Harold Linde, MFA
Consultants: Esra, Kay, and Nealah

What's the project?

To provide the client, Harold Linde, with a feasibility study for the design of a secure, accessible, and self-sustaining teahouse that prioritizes environmental sustainability and aesthetics.



What is the client's vision?

Intimate space for tea-centric gatherings and ceremonies on campus

Selective public access

Low to no phone zone

Shoeless space

Juxtaposition: interior vs exterior



What's the scope?

Security: limited users, protection from theft and vandalism

Accessibility: customizability and modular design

Sustainability: longevity and maintenance of the space

Location: best venue on campus

What have we done?

Policy analysis

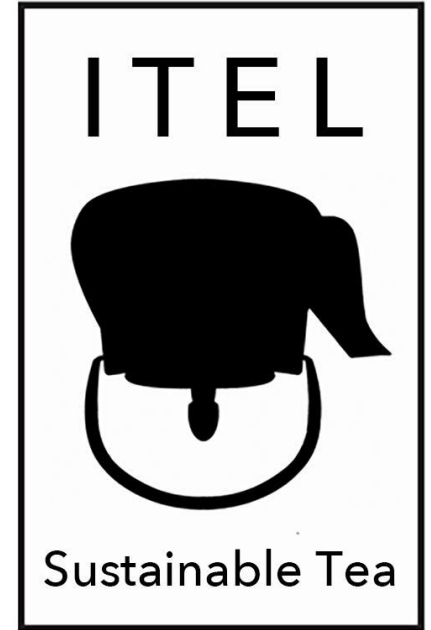
Stakeholders analysis

Security analysis

Survey

Case study

SWOT analysis

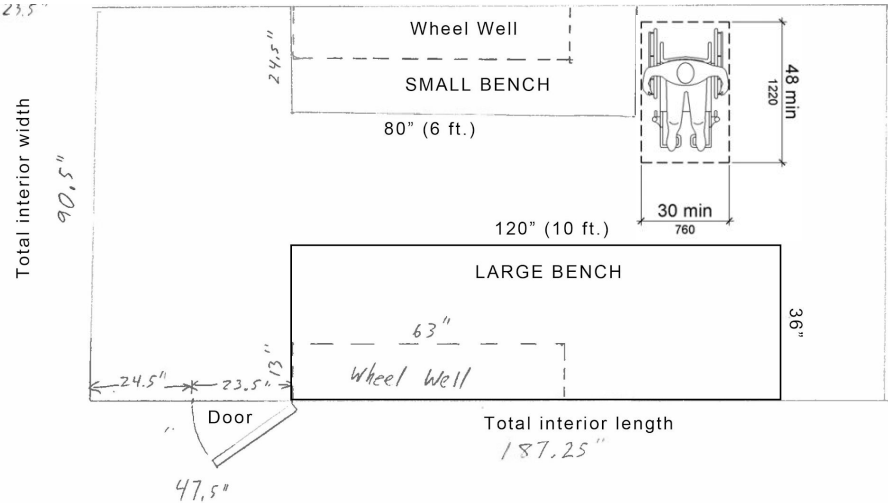


Policy Analysis

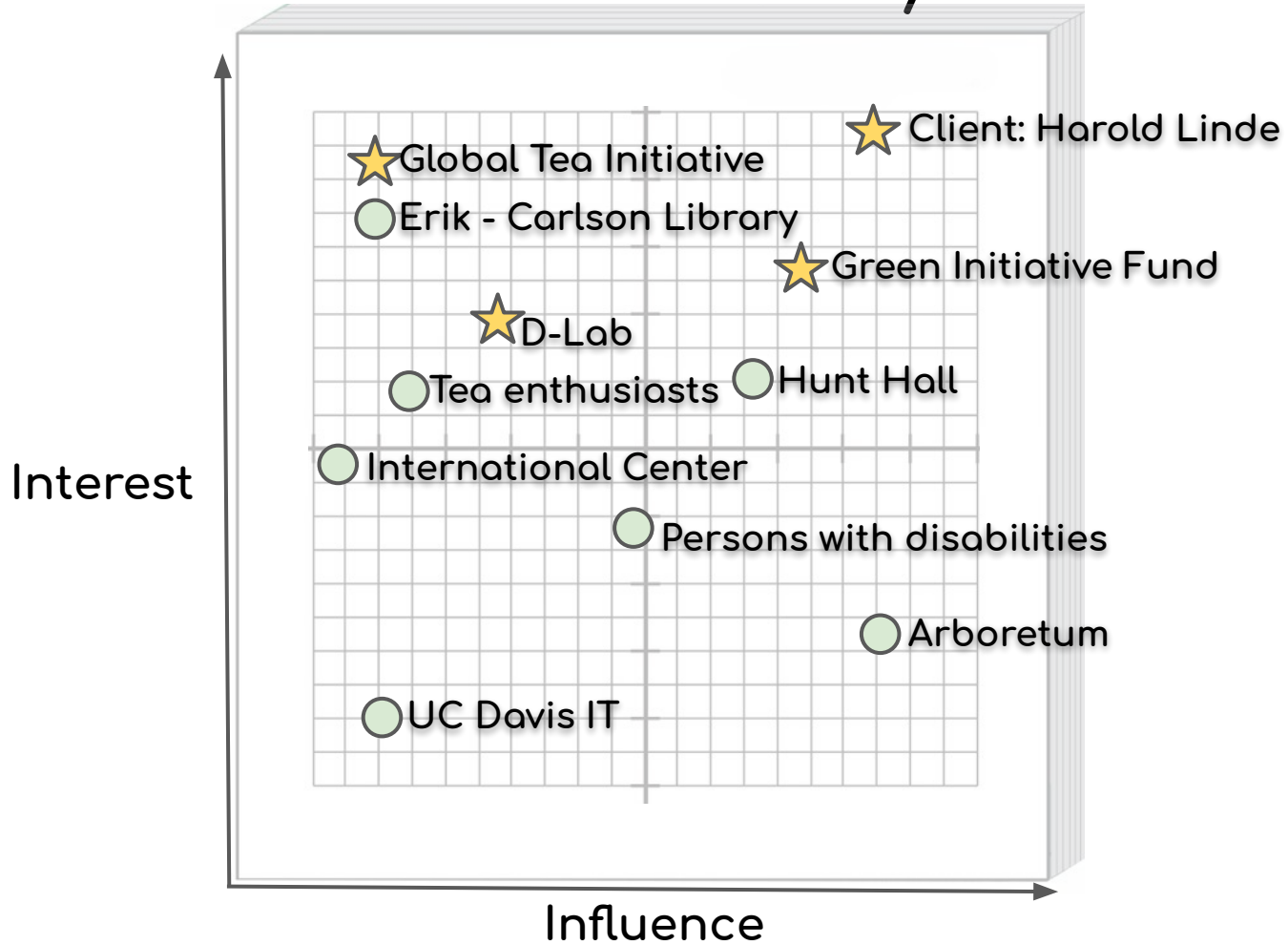
2010 ADA Guidelines

Accessible entrance and route

1 designated wheelchair space

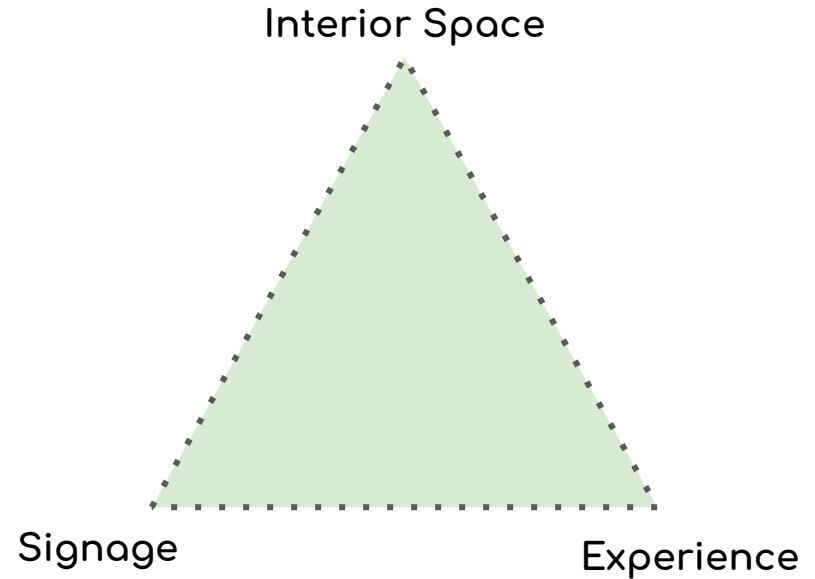


Stakeholders Analysis



Survey Results

- Comfort
- Seating
- Inclusion
- Conflicting needs



Case Study: Japanese Teahouse Design

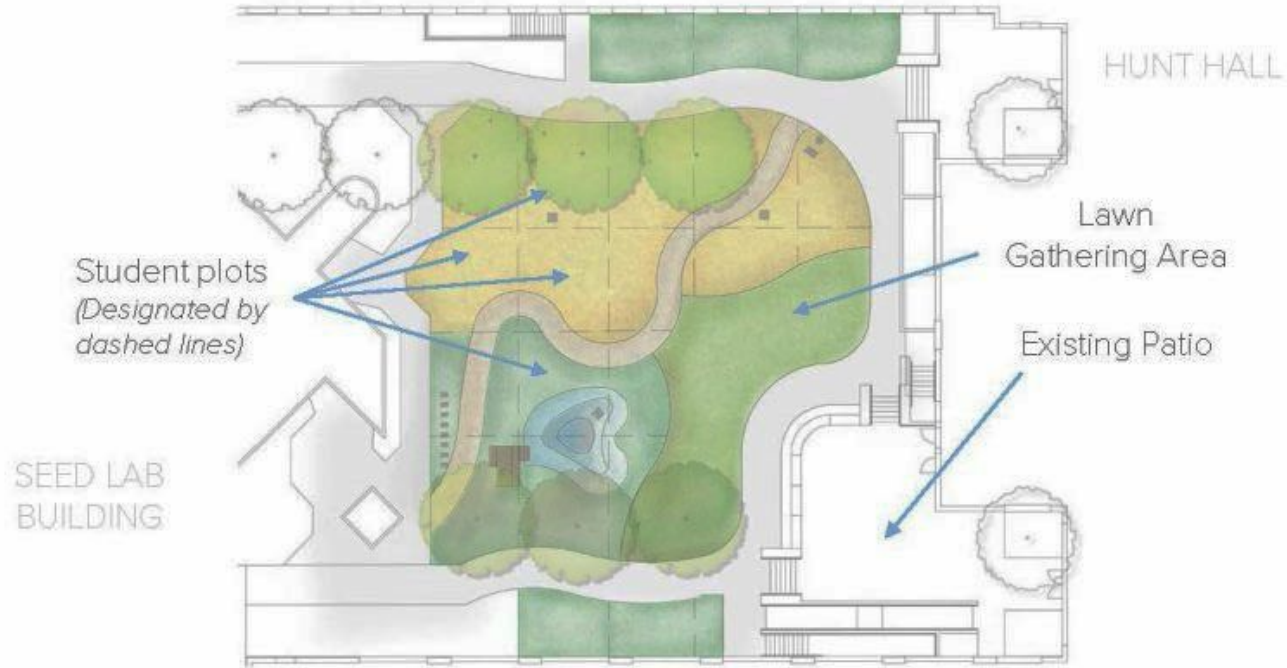
- Chashitsu
- Key Guidelines
- Modular furniture



SWOT Analysis: Overall Project

Strengths	Weaknesses
<ul style="list-style-type: none">● Existing structure● Funding● Client● Portability	<ul style="list-style-type: none">● Lack of maintenance party● Confined space● Funding● Location
Opportunities	Threats
<ul style="list-style-type: none">● Novel security systems● Multiple interested parties● Multiple potential locations● Further funding● First tea lab on UC Davis campus	<ul style="list-style-type: none">● Theft, vandalism, improper use● UC Davis Security● Environmental factors

SWOT Analysis: Hunt Hall Courtyard



SWOT Analysis: Hunt Hall Courtyard

Strengths	Weaknesses
<ul style="list-style-type: none">● Secure location● Easily accessible area● Integrated with nature	<ul style="list-style-type: none">● Public but not universally known
Opportunities	Threats
<ul style="list-style-type: none">● Student projects each fall● Potential designated maintenance party: students and faculty	<ul style="list-style-type: none">● Nearby construction● Student projects: courtyard upheaval

SWOT Analysis: Arboretum - Wyatt Deck



SWOT Analysis: Arboretum - Wyatt Deck

Strengths	Weaknesses
<ul style="list-style-type: none">● Integrated with nature● Universally known location	<ul style="list-style-type: none">● Lack of maintenance party● Not most aesthetic location● Off main Arboretum trail● Requires Arboretum specific signage
Opportunities	Threats
<ul style="list-style-type: none">● New security systems● Not required to follow ADA standards	<ul style="list-style-type: none">● Security: vandalism, theft, improper use● Environmental factors

SWOT Analysis: Carlson Library



SWOT Analysis: Carlson Library

Strengths	Weaknesses
<ul style="list-style-type: none">● Accessible location● Indoor environment● Secured by UCD● Maintained by UCD	<ul style="list-style-type: none">● Not portable● Subject to ADA standards● Less design flexibility● Only one key
Opportunities	Threats
<ul style="list-style-type: none">● No external design required● New target audience: vet med● Podcasts● Tea sessions led weekly	<ul style="list-style-type: none">● Near other study rooms, disruptions● Loss of key

What do we propose?

D-Lab II considerations

Accessible entrance

Modular furniture

Online sign-up system

Remaining questions

Who will maintain the space?

Best location?

References

U.S. Department of Justice. (2010). 2010 ADA Standards for Accessible Design. Retrieved January 24, 2020 from https://www.ada.gov/2010ADASTandards_index.htm.



