



Monitoring Sustainable Logging in the Congo

Client



Fabrice Inkonkoy

Humphrey Fellow UCD 2019-2020

**Indigenous People & Local Community Advisor,
World Wide Fund for Nature**

Project Goal:

Create digital platforms to support and manage logging companies working legally under governmental agreement of the Congo Basin Forest. These systems will encourage sustainable logging practices, support local and Indigenous communities who collect a percentage from logging companies for development protects and ensure the DRC government is able to collect the taxes required by legal loggers.

Framing

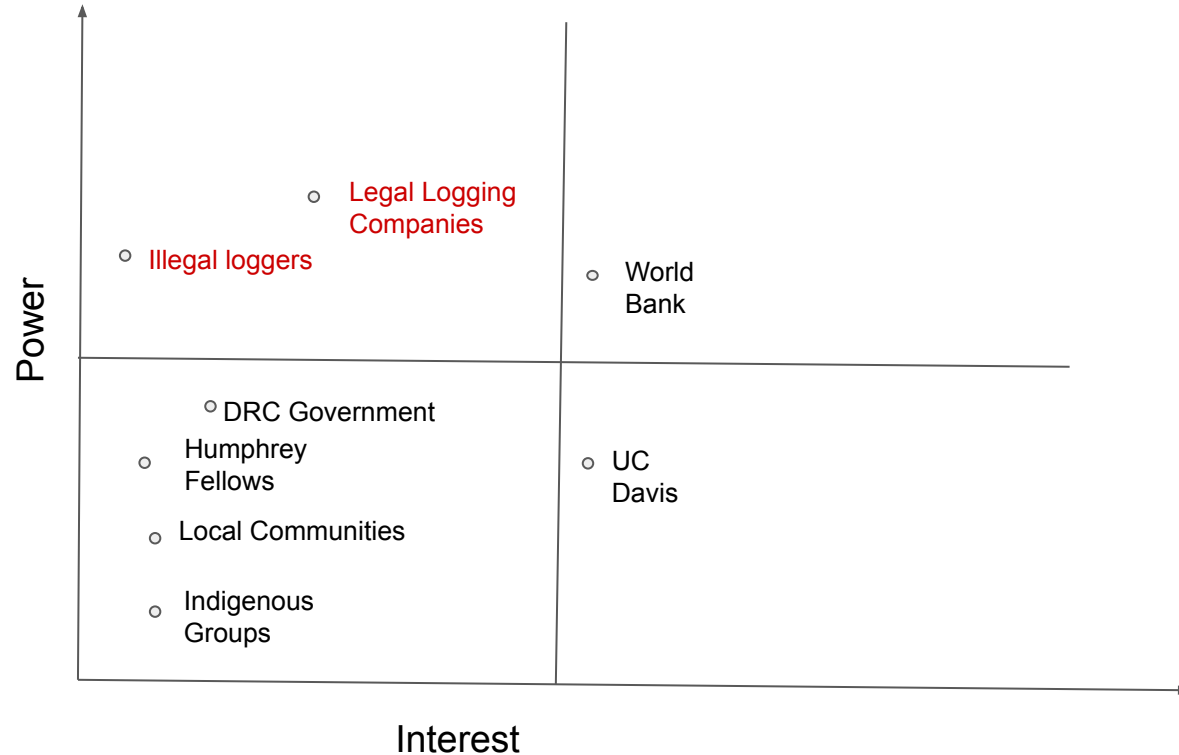
Deliverable : Research and recommendations to move forward with creating an accessible, yet safe database that supports contracts with local and Indigenous people of the DRC.

Key Partners: Humphrey Fellows, The World Bank, DRC Government, Indigenous leaders, legal logging groups, UCD, International Wood Market

Constraints: lacking economic analysis' in the Congo Basin

Budget: Undetermined. Possibility of teaming up with the Student Startup Center at UCD

Stakeholders Analysis



SWOT Analysis

Strengths

- Once local communities own their land they can choose to log or conserve
- Indigenous groups and local communities will be given more money to contribute to schools, hospitals and other necessities

Weaknesses

- Many small communities are lacking electricity
- Many local communities don't own their land
- Start up costs for legal logging are expensive

Opportunities

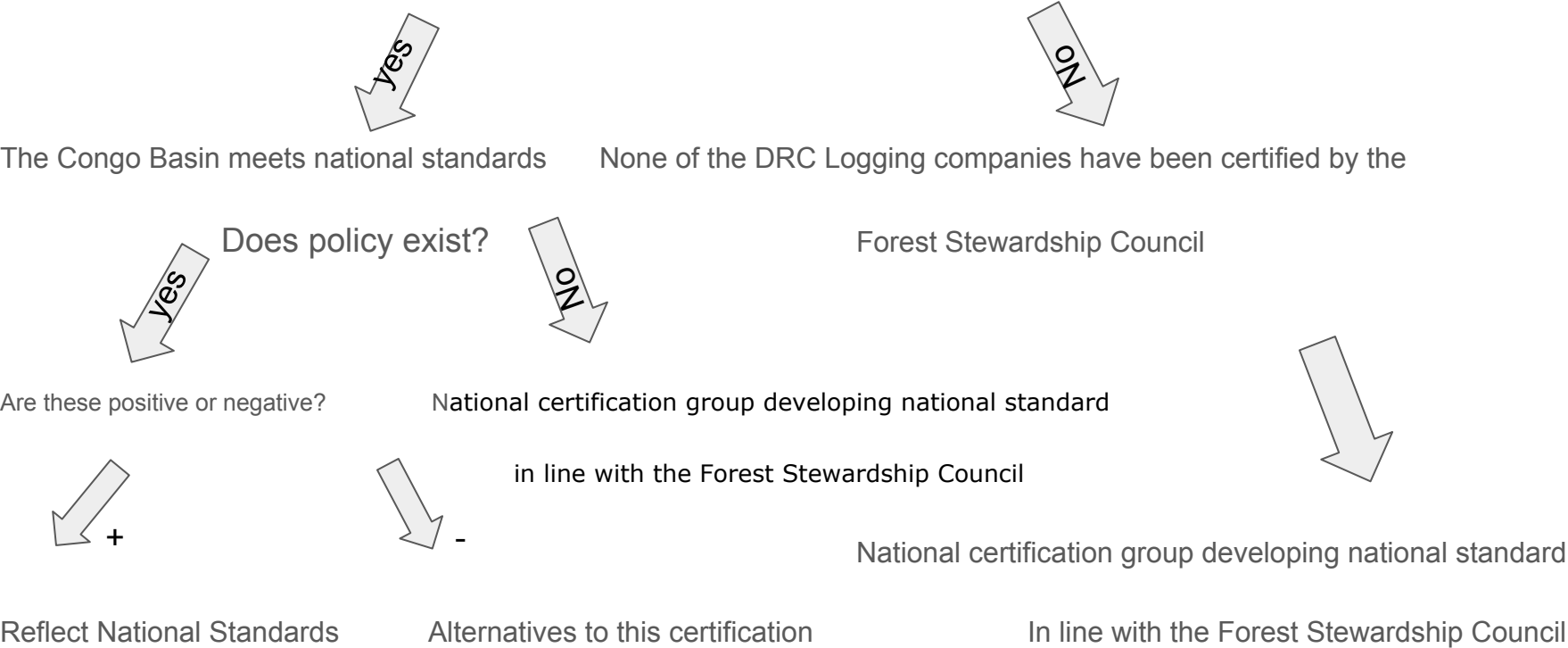
- Communities can predict how to spend their money
- Streamlining the system can allow communities to retain more money

Threats

- Illegal loggers making it difficult for communities to acquire money
- Leaders of small communities often use money for their own projects

Policy Analysis

Sustainable Logging Certification



Prior Art

Forest Watcher

The Forest Watcher mobile app brings the dynamic online forest monitoring and alert systems of Global Forest Watch offline and into the field. Monitor areas of interest, view deforestation and fires alerts, navigate to a point to investigate, and collect information about what you find, regardless of connectivity.



or [download .apk \(v1.9.2\)](#)

Forest Watcher mobile is a complete application on its own. However accessing the web version application enables even more capabilities, including viewing and collecting reports, creating and assigning AOIs, and uploading your own contextual data.

[ACCESS WEB APP](#)

[Read more about Forest Watcher](#) and [learn how to use it.](#)



In the Congo Basin Forest region deforestation often occurs in remote areas far from view, making monitoring and protecting these places difficult even for those working on the ground. Photo credit/Jane Goodall Institute

Image: Global Forest Watch

Forest Watcher is a free mobile application for forest monitoring and reporting in the field. The app allows users to access Global Forest Watch deforestation alert systems easily, monitor areas of interest, navigate to alerts and report information – regardless of internet connectivity.

The new mobile app Forest Watcher changes this equation, giving those on the frontline, the forest guards, law enforcement agents and authorities and the Indigenous forest communities the much-needed information to act accordingly.

Prior Art

KoBoCollect Toolbox



App used for primary data collection in humanitarian emergencies and other challenging field environments

- **Enter data from interviews or other primary data - online or offline.**
- **Unlimited number of forms, questions, or submissions (including photos and other media) that can be saved on your device.**
- **Visualize, analyze, share, and download collected data online**



Image: Google Play

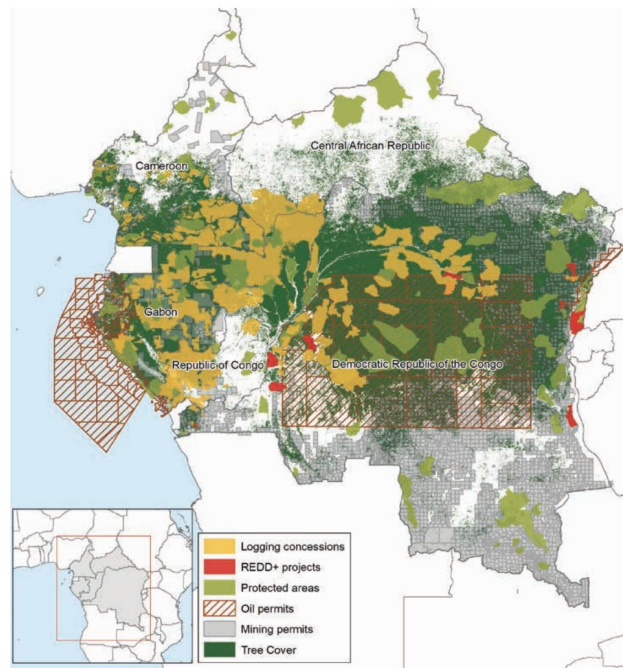


Using a participatory approach can bring different segments of the community together and helps capture a more accurate and complete view of the community's land and resource use.

Mapping for Rights

This platform aims to support Congo Basin communities and share detailed geographical information about their lands and resources.

MAP 1 - LAND ALLOCATIONS IN THE CONGO BASIN



Large-scale allocations for commercial logging, the extractive industries and strict nature conservation have generally not delivered the expected economic, social and environmental benefits in forest areas. Their overlap with areas under customary ownership has led to widespread land and resource-related conflict in the region and a growing realisation among policy makers that new approaches to land and forest management are needed. Source: MappingForRights, WRI

Recommendations

Prior to creating App

Quantitative Economic Analysis of Community Forestry in DRC

Provide electrical source to more remote communities to charge digital devices (solar or generator)

Identify which technology is most accessible in the region

Creating the App

Name it (Logging Legalizer, Logging Leverage) it should probably have some alliteration and represent communities

Anonymity - ensure the information of its users is kept secure

Provide education for trouble-shooting the App

Create an Algorithm that reflects the direct relationship between the number of trees cut and amount of money that goes to each community.

THANK YOU!

QUESTIONS?

Bibliography

“New Mobile App to Fight Deforestation Launched” <https://infocongo.org/en/new-mobile-app-to-fight-deforestation-launched/>

Forest Watcher App

<https://forestwatcher.globalforestwatch.org/>

Illegal Logging Image All Africa. **“Central Africa: Organized Crime Trade Worth Over U.S. \$30 Billion, Responsible for Up to 90 Percent of Tropical Deforestation.”**

<https://allafrica.com/stories/201209271378.html>

“KoBo Collect” https://play.google.com/store/apps/details?id=org.koboc.collect.android&hl=en_US

“Mapping For Rights” <https://www.rainforestfoundationuk.org/mapping-for-rights-briefs-redd>